

# JOCHE NANOPARTICLE ENCAPSULATION TECHNOLOGY

Patent Pending

NUREVELATION LLC



## SUPERIOR PROCESS

Cargo Maintained at High Concentration and High Purity. Proven Homogeneity. Environmentally Friendly.



## ALL-NATURAL

NO EMULSIFIERS  
NO ARTIFICIAL PRESERVATIVES  
NO SURFACTANTS  
NO CHEMICAL STABILIZERS



## GRAS COMPLIANT

Encapsulation Components of JoChe Nanoparticles are ALL GRAS Compliant.

## ABOUT JOCHE

A simple process which uses ALL-Natural elements to create self-assembling nanoparticles, as small as one nanometer, which can encapsulate a variety of vitamins, nutraceuticals, amino acids, proteins, and/or other compounds, either individually or in custom branded molecular cocktails.

## JOCHE ENCAPSULATION SOLVES THE FOLLOWING INGREDIENT PROBLEMS:

- Minimal Solubility
- Poor Shelf-Life Stability
- Bad Taste and Odor
- Cost of Manufacturing
- Compound Degradation

## JOCHE BENEFITS



Observed Quicker Onset in Field Studies



Converts Oil-Based Compounds into a Water-Soluble Powder



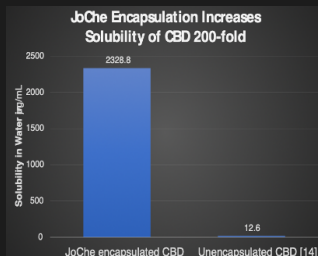
Keeps Cargo Compound(s) Composition 100% Pure



Taste and Odor Masks a Myriad of Cargo Compounds



Shelf-Life Stable and Room Temperature Stable for 18 Months



## NUREVELATION EXECUTIVE TEAM:



**T. NAOMIE LUCAS**

FOUNDER  
AND  
PRESIDENT



**ALLEN WILSON**

MANAGING  
PARTNER



**BILL GREEN**

CHIEF  
FINANCIAL  
OFFICER

## NUREVELATION SCIENTIFIC TEAM:

### **Dr. Clement Ameho**

Ph.D., Human Nutrition,  
Immunology, Pet Nutrition/  
Pet Care Research

Nutritional Immunology;  
Nutrient Metabolism;  
Oxidative Stress/  
Antioxidant Metabolism;  
Nutrition and Aging;  
Nutrition in Renal Health

### **Danton Brown**

Chemical Engineer

Chemical Process  
Scale-Up and Optimization;  
Design and Development  
of Custom Systems;  
Production Equipment  
Implementation; Process  
Engineering; Production  
Facility Design

### **Dr. Cesár**

#### **Carrasco-Lopez**

Ph.D., Molecular  
Biosciences

Crystallography;  
Biochemistry;  
Optogenetics;  
Chemical Biology;  
Protein Engineering;  
Metabolic Engineering

### **Dr. Davide Deodato**

Ph.D., Chemical and  
Pharmaceutical Sciences

Medicinal Chemistry;  
Biochemistry;  
Organic Synthesis;  
Drug Discovery;  
Analytical Chemistry;  
Pharma Patent Filing

### **Dr. Robin Geller**

Ph.D., Molecular Biology

Pharmacovigilance  
Strategy;  
Global Compliance  
Education;  
Regulatory Intelligence;  
Cellular Immunology;  
Cell Biology;  
Technology Assessment and  
Strategy Development

### **Kathleen McDowell**

Quality and Regulatory  
Specialist

Quality System Development  
and Deployment; UFDA cGMP  
Manufacturing Experience  
with IVD Medical Device, RUO  
Diagnostics, and Hemp-  
Derived Products in Food and  
Dietary Supplements; Lead  
Auditor ISO 19011/13485;  
Preventive Controls Qualified  
Individual (PCQI)

### **Dr. Teilo Schaller**

Ph.D., Experimental  
Pathology

Drug Development;  
Immunotherapy;  
Business Development;  
Research & Development;  
Portfolio Management

### **Eric Seidel**

R.Ph., Pharmacist

Pharmacology; Medication  
Therapy Management;  
Research & Development;  
Drug Interaction and  
Side Effects

### **Dr. Harry Stafford**

M.D., MBA, CSCS, CAQSM

Associate Director of Duke  
Sports Sciences Institute  
("DSSI"); Director of Sports  
Performance for DSSI;  
Head Team Physician  
and Director of Sports  
Performance at NCCU;  
Board Member of the  
N.C. Special Olympics

### **Dr. Richard A. White**

M. Sc., Ph.D., Molecular  
and Cell Biology

Drug and Diagnostic  
Development; New Product  
Planning and Launch;  
Microscopy (TEM, SEM, AFM);  
Business Development;  
International (IVD/RUO/CLIA  
Expertise; Diagnostic  
(Companion Diagnostics);  
Product Positioning and  
Launch; Lean and  
Process Development

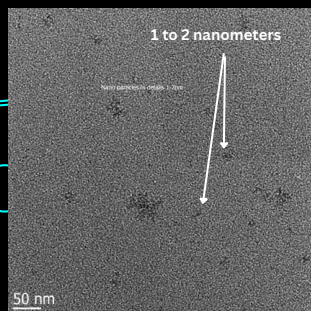


Figure 1. TEM images of populous  
JoChe nanoparticles 1 to 2 nanometers

## COMPANY MILESTONES:

July 2019: NuRevelation Founded

July 2019 - August, 2021: Four Families of Patents Filed by Ballard Spahr.

September 2021: JoChe Process Named Among the Top Six (6) Emerging Technologies  
by the U.S. Department of Defense in the Area of Human Performance.

November 2022 - TEM Images of JoChe Nanoparticles Below 10nm by Rice University (See Pic)

February/March 2023 - Applications for International Patents Filed

(PCT and Other Jurisdictions).

